

Flex-Max



© Copyright. All rights reserved.

At last a fume extractor that reaches all the way, even into the tightest corners

Flex-Max is the perfect extractor for those "awkward spots" and areas with a low ceiling. It is unmatched in its ability to reach to high positions and locations far from the arm's mounting position.

Very handy when it comes to reaching into and under work pieces, or when you need to mount the arm at a lower height.

PLYMOVENT AB

Föreningsgatan 37, S-211 52 Malmö, Sweden
Tel. +46 40 30 31 30, Fax +46 40 30 31 40
www.plymovent.com, info@plymovent.se

PLYMOVENT®

– an ISO 9001 certified manufacturer

Maximum flexibility at

Maximum working area

Just as the name implies, Flex-Max gives maximum flexibility in the whole working area. The unique construction of the arm, with no fewer than 5 adjustable joints, 2 of which are ball-bearing mounted, makes positioning quick and simple. This enables the extractor to work efficiently even under the most difficult conditions and in restricted space.

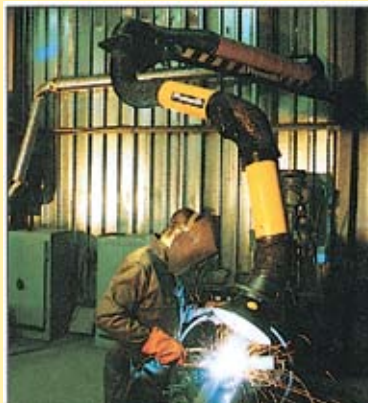
Quality at an unbeatable price

One of the most pleasant surprises will surely be the price. In spite of the fact that Flex-Max is an advanced extractor, its price will bring a fume-free working environment within everyone's price range.

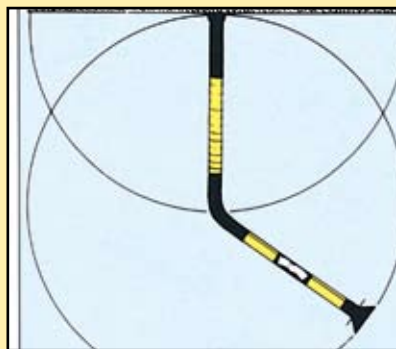
PlymoVent offers you a clean working environment at the right price.



Flex-Max is unmatched in its ability to reach into and under work-pieces – very handy when you are welding on cars, inside containers etc. Shown here with extension FSL-1.



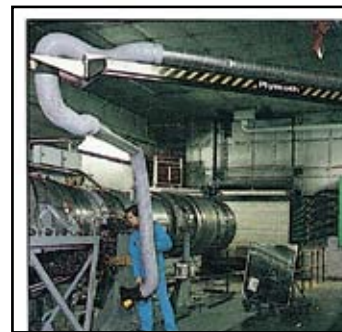
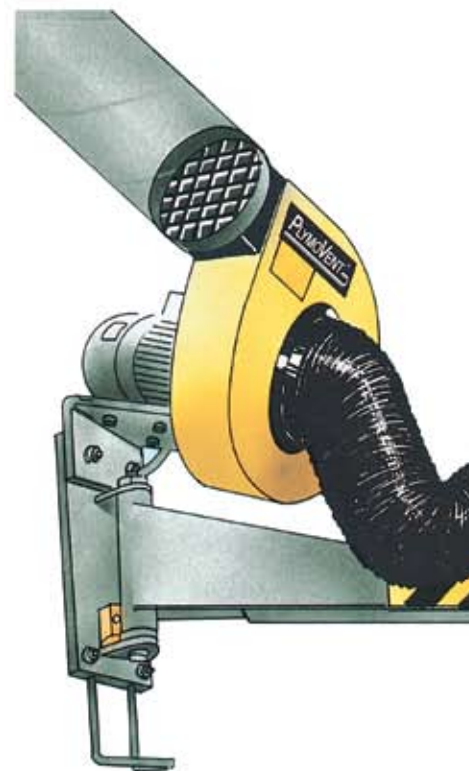
Through its unique construction, Flex-Max can also be mounted in areas with a low ceiling, or where you simply want a low mounting height.



The outer arm is PlymoVent's ball-bearing KUA arm. It can be positioned in one simple movement within its total reach and can be turned through 360°.



Flex-Max is light but very robust. The inner arm can carry tools and accessories up to 50 kg in weight. In spite of the heavy load, the arm is very easy to move, thanks to the patented ball-bearing joints.



Flex-Max at work at the Aircraft Motor Division of the Volvo Company.

ESSENTIAL FACTS

Flex-Max consists of an inner arm and an outer arm, which are both hinged in ball-bearings. The outer arm has 3 adjustable joints. This design and construction makes it so easy for you to position the arm just where you want it, in one swift movement. It can be mounted at any height – high or low.

The inner arm, from which you can suspend up to 50 kg in weight, tools, equipment etc., comes in 4 different lengths from 1.5 metres to 4.5 metres. The outer arm is available in 3 lengths 2 m, 3 m, and 4 m. It can be turned through 360° and positioned anywhere within its radius.

All manoeuvring takes place at the hood with one hand only.

Together these two arms make Flex-Max, the extractor with maximum flexibility with a reach for all needs anywhere from 0 to 9 metres.

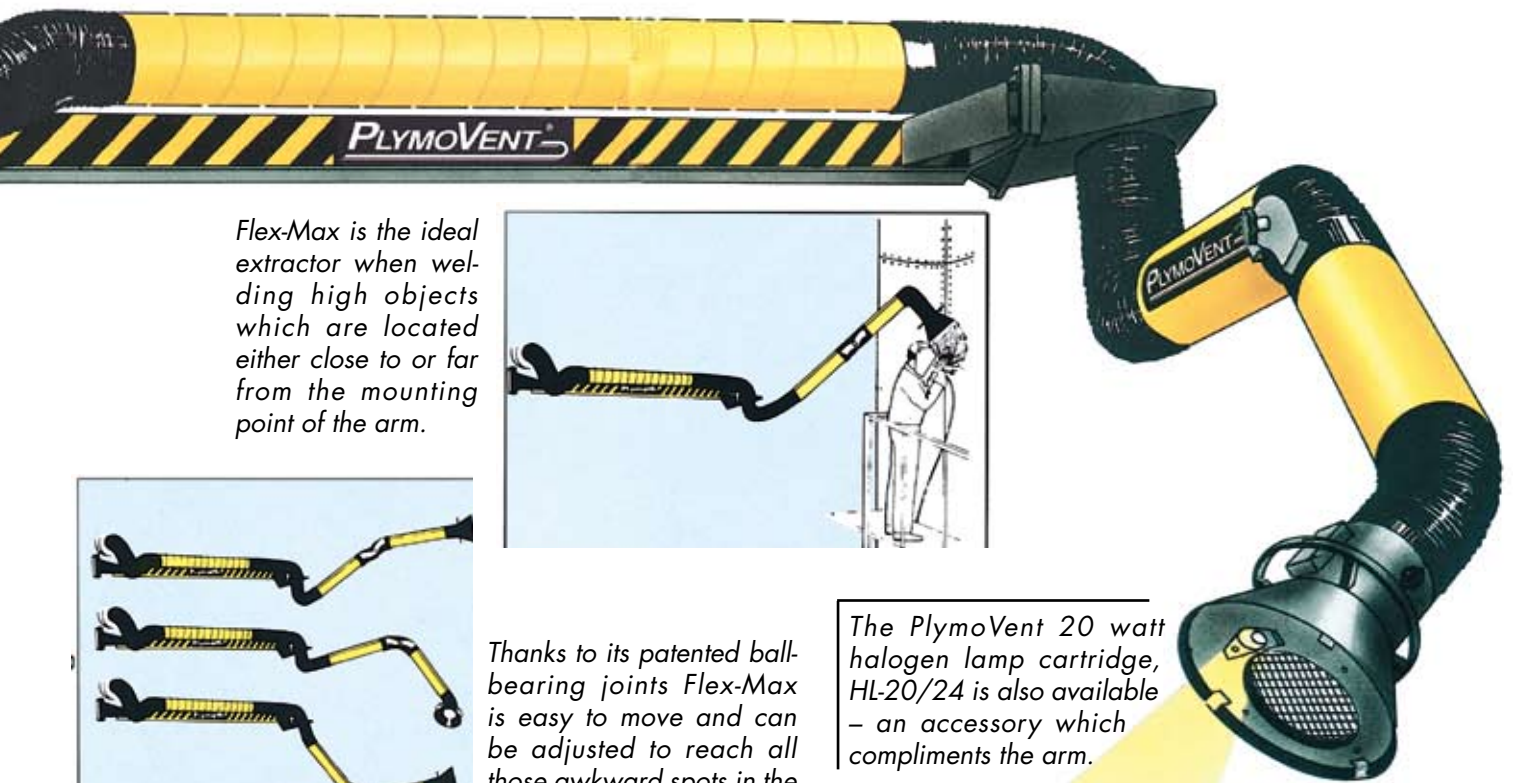
an unbeatable price



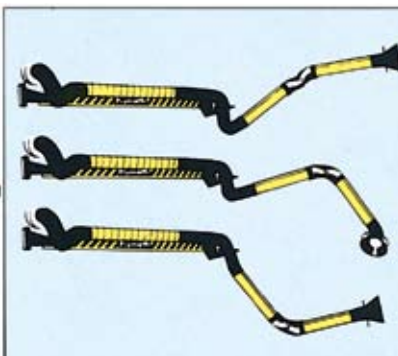
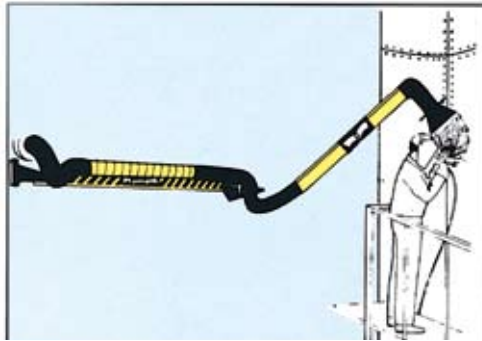
A specially designed model of PlymoVent's Flex-Max is equipped with a unique pneumatic "disc brake" in the wall mounting bracket of the swinging arm. The unenergised brake allows for an almost friction-less adjustment sideways. Efficient and safe locking is performed using the pneumatic lock, this is simply switched on and off by one hand from the hood control.



The extractor hood can be angled through more than 110° – forwards, backwards and sideways. Supreme flexibility.



Flex-Max is the ideal extractor when welding high objects which are located either close to or far from the mounting point of the arm.



Thanks to its patented ball-bearing joints Flex-Max is easy to move and can be adjusted to reach all those awkward spots in the working area.

The PlymoVent 20 watt halogen lamp cartridge, HL-20/24 is also available – an accessory which compliments the arm.

The hood can be positioned in one simple movement anywhere within a radius of about 9 metres and up to 8 metres in height (largest model).



All manoeuvring of Flex-Max takes place at the hood with its circular handle which can be reached and used from any angle. Positioning of the arm and hood is quick and simple and a one-handed job.



TECHNICAL DATA

PlymoVent Flex-Max

(Wall bracket, arm, hose and hood with damper included).

Prod. no.	Max. working radius m	a mm	b mm	c mm	Hose diameter mm	Total weight kg	Rec. mounting height m	Recommended airflow at hood m ³ /h
FM-1520	4.0	1850	1120	1070	160	46	2.0 - 3.0	800-1200
FM-1530	4.9	1850	1650	1520	160	48	2.0 - 4.0	800-1200
FM-1540	5.8	1850	2300	1870	160	50	2.5 - 5.0	800-1200
FM-2520	5.0	2850	1120	1070	160	58	2.0 - 3.0	800-1200
FM-2530	5.9	2850	1650	1520	160	60	2.0 - 4.0	800-1200
FM-2540	6.8	2850	2300	1870	160	62	2.5 - 5.0	800-1200
FM-3520	6.0	3850	1120	1070	160	79	2.0 - 3.0	800-1200
FM-3530	6.9	3850	1650	1520	160	81	2.0 - 4.0	800-1200
FM-3540	7.8	3850	2300	1870	160	83	2.5 - 5.0	800-1200
FM-4520	7.0	4850	1120	1070	160	91	2.0 - 3.0	800-1200
FM-4530	7.9	4850	1650	1520	160	93	2.0 - 4.0	800-1200
FM-4540	8.8	4850	2300	1870	160	95	2.5 - 5.0	800-1200

Fans for mounting directly to the wall bracket (Note! The fans must be fitted with the recommended motor overload).

Prod. no.	Airflow freeblowing m ³ /h	Motor kW	Voltage	Motor Overload Amps	Motor Overload Prod. no.	Approx. airflow at the hood at 10 m outlet duct m ³ /h
FUK-1800	1800	0.55	400 V, 3-ph	1.4 - 1.5	MS-1.0/2.9*	750
FUK-2100	2160	0.75	400 V, 3-ph	1.9 - 2.0	MS-1.0/2.9*	1000
FUK-2101	2160	0.75	230/110 V, 1-ph	5.0 - 5.2	MS-3.7/12.0*	1000

* To be fitted in PlymoVent starter panel. For other installations, please contact our customer service.

Pressure loss chart

