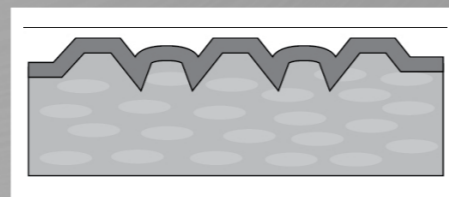
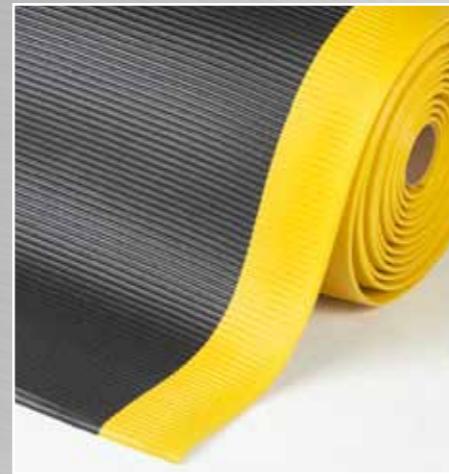


# 406 Crossrib Sof-Tred™



- Side-to-side wide ribs provide traction and is easy to sweep clean.
- Exceptional worker comfort due to 12,7 mm thick newly formulated compound.
- Protective layer of exclusive Dyna-Shield™ extends service life by 50% compared to regular microcellular vinyl.
- Fire rating Class 2 according NFPA Safety Code 101.
- Available yellow borders along sides comply with OSHA code 1910-144.
- All 4 sides are bevelled and sealed to minimize tripping hazards.
- Free of toxic DOP and DMF.

# 406 Crossrib Sof-Tred™

PRODUCT SPECIFICATIONS			
Designation	Industrial matting		
Type	Anti-fatigue		
Description	Side-to-side wide ribs surface, with protective layer of Dyna-Shield™		
Material	Microcellular vinyl		
Process	Foaming		
Category	Better		
Recommended use	Medium duty – dry areas		
Colours	Black/Yellow, Grey		
Weight	4 kg/m <sup>2</sup>		
Thickness	12,7 mm		
Standard sizes	60 cm x 91 cm 91 cm x 150 cm 60 cm x 18.3 m 91 cm x 18.3 m 122 cm x 18.3 m		
Custom sizes	60 cm, 91 cm and 122 cm per linear meter		
Special remarks	With Dyna-Shield™, a tough barrier which is 50% more resistant to wear. Ribs are running width-wise.		
PRODUCT TESTING			
Tests	Norms	Results	
Compression deflection	U.S.		
	1.4 Kg/cm <sup>2</sup>		0,71 cm
	2.8 Kg/cm <sup>2</sup>		0,84 cm
Foam battery	ASTM D3574		
Abrasion resistance	ASTM D3884-01		
	500 Cycles		1,7% weight loss
	1000 Cycles		2,02% weight loss
Static coefficient of friction	ASTM C1028-96		1,10
Elongation	ASTM D412		144%
Breaking load	ASTM D412		22,1 lb
Graves tear strength	ASTM D 1004		10,5 lb
Hardness	ASTM D2240-02		25 Shore A
Anti-slip	DIN 51130 and BG-RULE BGR181		
FIRE TESTING			
	Critical radiant flux	ASTM E-648	0.32 watts/cm <sup>2</sup>
	Fire retardancy	DIN4102 EN 13501-1	
	Flammability test	ASTM D2859	Pass
ESD	ANSI ESD S7.1 50% Humidity		
Sustainability	<ul style="list-style-type: none"> <li>• Recyclable material</li> <li>• Reach Compliant (Registration, Evaluation, Authorization and Restriction of Chemicals)</li> </ul>		