

# SPECIAL SOLUTIONS.



## BASECAP FLEX-ACTIVE



EN 812

### Benefits

- **Protective property down to – 20 °C**  
For use in low temperatures (e.g. outdoors in very cold conditions)
- **Comfortable to wear**  
Due to innovative fit concept and flexible 3D damping elements
- Perfect fit even during overhead work
- Large mesh fabric for ventilation
- Easy-to-clean polyester material
- Modern design
- A short visor allows a large field of vision

<b>Certification</b>	DIN EN 812		
<b>Protective properties</b>	<ul style="list-style-type: none"> <li>■ Protective property down to – 20 °C</li> </ul>		
	<b>Internal equipment</b>		
<b>Type</b>	3D damping elements		
<b>Special feature</b>	Multi-part special foam		
<b>Version</b>	Quick adjustment with clamping buckle		
	<b>Helmet features</b>		
<b>Series</b>	<ul style="list-style-type: none"> <li>■ Polyester material with ventilation</li> </ul>		
	<b>Version</b>		
<b>Size</b>	1	2	3
<b>Head circumference</b>	52 – 56 cm	53 – 62 cm	59 – 63 cm
<b>Colours</b>	–	<ul style="list-style-type: none"> <li>■ RAL 5010/ RAL 7000</li> <li>■ RAL 9005</li> </ul>	–
	<b>Parameters</b>		
<b>Shape</b>	Straight with lowered neck and short visor		
<b>Material</b>	Polyester		
<b>Weight</b>	approx. 140 g		

## APPLICATIONS\*

- Production and assembly
- Power plants
- Railway, transport and logistics
- Mechanical engineering
- Airports
- Automotive industry

\* If according to the risk assessment no industrial safety helmets according to DIN EN 397 are required.

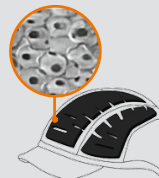


## DAMPING SYSTEM

### Benefits

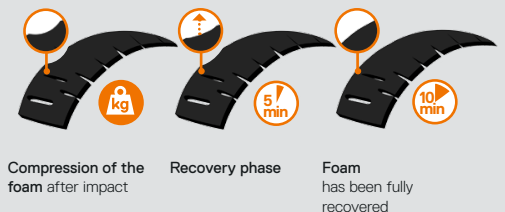
- Multi impact compliant
- Lightweight
- Adaptive absorption
- In impulse responding behaviour
- Environmental compatibility
- Long product life up to 10 years
- High temperature stability up to 100 °C
- Washable (hand wash)

### Foam Structure

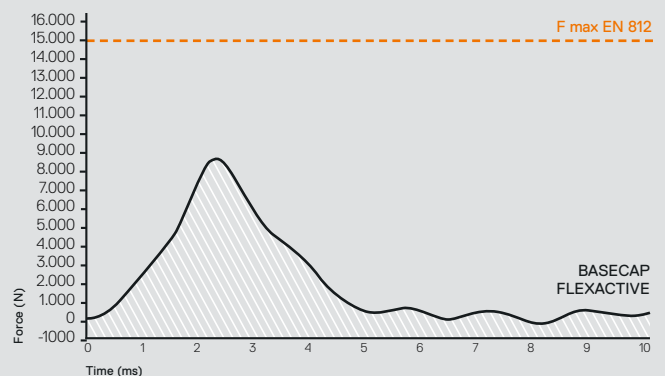


### Functionality

Viscoelastic foam with memory effect



### Force-time-table



SCHUBERTH